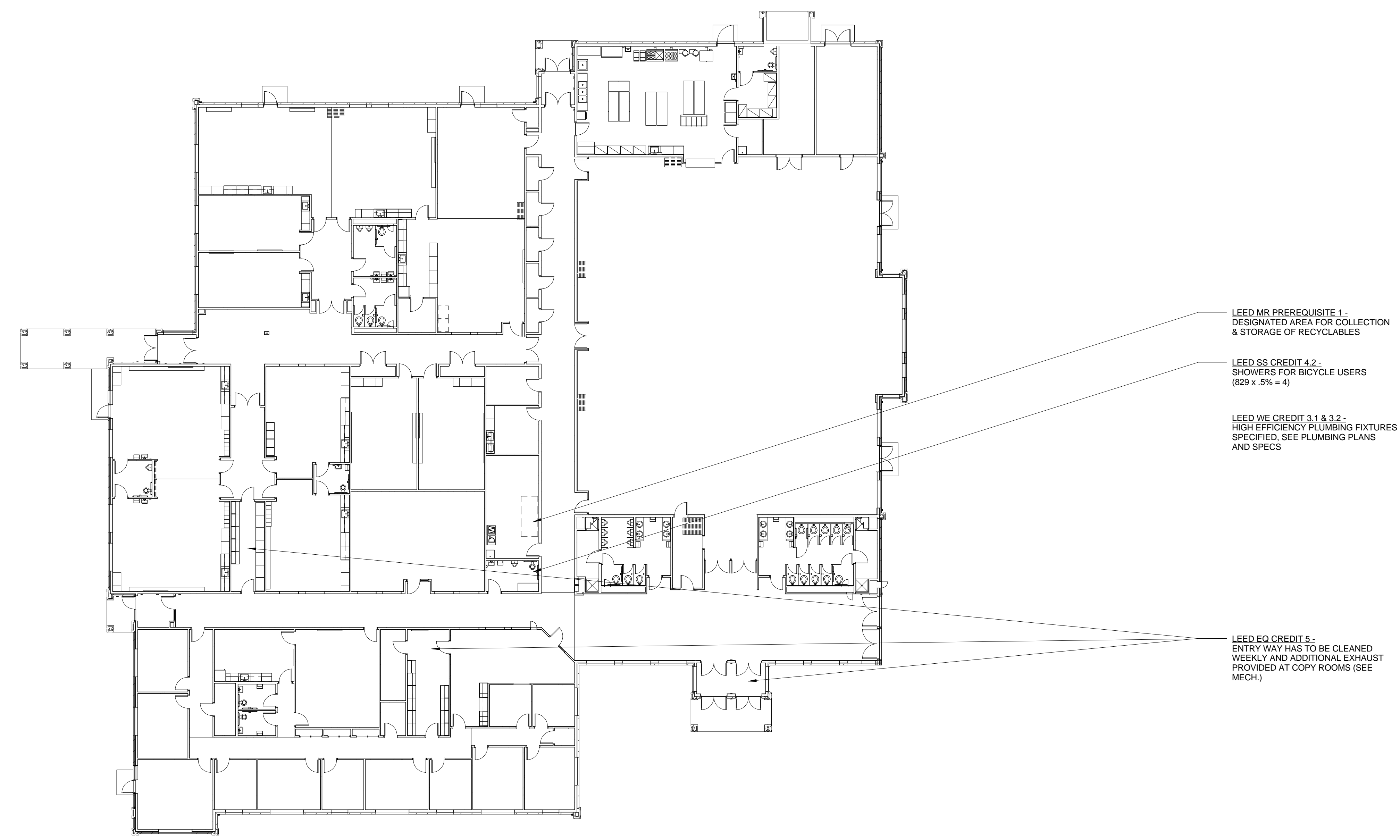


2 LEED SITE PLAN
1" = 100'-0"



1 LEED FLOOR PLAN - 01
1/16" = 1'-0"

LEED DOCUMENTATION NOTES:

It is the intent of the Owner to seek LEED (Leadership in Energy and Environmental Design) Certification for this project. The following are the specific credits that are required to be completed:

Sustainable Site Credits:

1. SS Prerequisite 1 Construction Activity Pollution Prevention
2. SS Credit 4.2 Alternative Transportation: Bicycle Storage and Changing Rooms
3. SS Credit 4.3 Alternative Transportation: Low Emitting & Fuel Efficient Vehicles
4. SS Credit 4.4 Alternative Transportation: Parking Capacity
5. SS Credit 5.2 Site Development: Maximize Open Space
6. SS Credit 6.1 Stormwater Management: Quantity Control
7. SS Credit 6.2 Stormwater Management: Quality Control
8. SS Credit 7.2 Heat Island Effect: Roof
9. SS Credit 8 Light Pollution Reduction

Water Efficiency Credits:

1. WE Credit 1.1 Water Efficient Landscaping
2. WE Credit 1.2 Water Efficient Landscaping
3. WE Credit 3.1 Water Use Reduction
4. WE Credit 3.2 Water Use Reduction

Energy & Atmosphere Credits:

1. EA Prerequisite 1 Fundamental Commissioning of the Building Energy Systems (Specs)
2. EA Prerequisite 2 Minimum Energy Performance (Specs)
3. EA Prerequisite 3 Fundamental Refrigerant Management (Specs)
4. EA Credit 1 Optimize Energy Performance (Specs)
5. EA Credit 3 Enhanced Commissioning (Specs)
6. EA Credit 4 Enhanced Refrigerant Management (Specs)
7. EA Credit 6 Green Power (Specs)

Materials and Resources Credits:

1. MR Prerequisite 1 Storage and Collection of Recyclables
2. MR Credit 2 Construction Waste Management (Specs)
3. MR Credit 4 Recycled Content (Specs)
4. MR Credit 5 Regional Materials (Specs)
5. MR Credit 7 Certified Wood (Specs)

Indoor Environmental Quality Credits:

1. EQ Prerequisite 1 Minimum IAQ Performance (Specs)
2. EQ Prerequisite 2 Environmental Tobacco Smoke (ETS) Control
3. EQ Credit 3.1 Construction IAQ Management Plan: During Construction (Specs)
4. EQ Credit 4.1 Low Emitting Materials: Adhesives and Sealants (Specs)
5. EQ Credit 4.2 Low Emitting Materials: Paints and Coatings (Specs)
6. EQ Credit 4.3 Low Emitting Materials: Carpet Systems (Specs)
7. EQ Credit 5 Indoor Chemical & Pollutant Source Control
8. EQ Credit 6.1 Controllability of Systems: Lighting (Specs)
9. EQ Credit 6.2 Controllability of Systems: Thermal Comfort (Specs)
10. EQ Credit 7.2 Thermal Comfort: Verification (Specs)

Innovation & Design Process Credits:

1. ID Credit 1.1 Innovation in Design (Specs)
2. ID Credit 2 LEED Accredited Professional (Specs)



NO.	REVISIONS	DATE