

CODE NARRATIVE INFORMATION

THIS FACILITY IS ALL NEW CONSTRUCTION.

APPLICABLE CODES
 2007 - Kentucky Building Code
 2006 - International Mechanical Code
 2005 - NFPA 70 National Electrical Code
 2007 - Kentucky Plumbing Code
 2003 - ICC / ANSI A117.1 Accessible and Usable Buildings and Facilities
 2006 - International Fire Code

TYPE OF CONSTRUCTION
 New, Type IIB

REASON FOR SUBMITTAL
 New Construction

LOCATION
 Holy Spirit Catholic Church
 4754 Small House Rd
 Bowling Green, Kentucky 42104

OWNER
 Holy Spirit Catholic Church
 2232 Small House Rd
 Bowling Green, Kentucky 42104

LOCAL FIRE DEPARTMENT
 Bowling Green Fire Department (270) 393-3702

LOCAL BUILDING INSPECTION DEPARTMENT
 City of Bowling Green, Building and Inspection Division (270) 393-3615

USE & OCCUPANCY CLASSIFICATION
 Mixed Use
 Assembly (A-2) - 12,452 SF
 Business (B) - 4,880 SF
 Educational (E) - 11,823 SF

Note: Building will be equipped with automatic sprinkler system. Per table 508.3.3 (p.81), no separation is required between A and E occupancies, and B occupancy will be separated by a one-hour wall.

STRUCTURAL FIRE PROTECTION
 Construction Classification - II B (tbl. 601 p.87)

Rating Requirements for Bldg. Elements (tbl. 601 p.87)

Structural Frame	0 hrs
Bearing Walls Exterior	0 hrs
Bearing Walls Interior	0 hrs
Nonbearing Walls Exterior	0 hrs
Nonbearing Walls Interior	0 hrs
Floor Construction	0 hrs
Roof Construction	0 hrs
Exterior Openings	0 hrs*

* (tbl. 602 p.88)
 No shafts are included in the building design

PASSIVE AND ACTIVE FIRE SAFETY FEATURES

PASSIVE FIRE SAFETY FEATURES
 New Corridors are not rated (Table 1016.1)

AUTOMATIC SPRINKLER SYSTEMS
 Provided: NFPA 13 and as required by 903.2.3 p.174

FIRE EXTINGUISHERS - F.E. (International Fire Code)
 Only required in special hazard areas per exception 1 to 906.1

FIRE ALARM & DETECTION SYSTEMS
 Per 2006 International Fire Code Section 907.2.1, 907.2.2, 907.2.3

BUILDING HEIGHTS AND AREAS
 Base Allowable Height & Areas (tbl. 503 p.76)
 Type IIB construction, typical.

Height Modifications:
 Automatic Sprinkler increase (504.2) - 55' + 20' = 75', or 2 story + 1 story = 3 stories allowed.

Area Modifications:
 Frontage increase (Equation 5-2, 506.2 p.78)
 $75\% = 100 \left[\frac{790}{790} - 25 \right] [1]$
 Automatic Sprinkler increase (506.3 p.78)
 300% single story building
 Fire Sprinkling is required for A-2 occupancy per 903.2.1.2, P. 174, where the fire area exceeds 5,000 sf or occupant load is 100 or more.

Allowable Area per Floor: Area Modification (Equation 5-1, 506.1 p.78)

A-2	$9,500 + (9,500 \times .75) + 9,500 (3) = 45,125 \text{ sf. allowed}$	$\frac{\text{Actual}}{\text{Allowed}} = \frac{12,452}{45,125} = .2759$
B	$23,000 + (23,000 \times .75) + 23,000 (3) = 109,250 \text{ sf. allowed}$	$\frac{\text{Actual}}{\text{Allowed}} = \frac{4,880}{109,250} = .0447$
E	$14,500 + (14,500 \times .75) + 14,500 (3) = 68,875 \text{ sf. allowed}$	$\frac{\text{Actual}}{\text{Allowed}} = \frac{11,823}{68,875} = .1717$

Sum of ratios: $.2759 + .0447 + .1717 = .5923 < 1$

Maximum Building Height is 75' > 28'-6" actual.
 A minimum Class C roof covering shall be provided, per table 1505.1.

PLUMBING:

NUMBER OF OCCUPANTS BY AREA

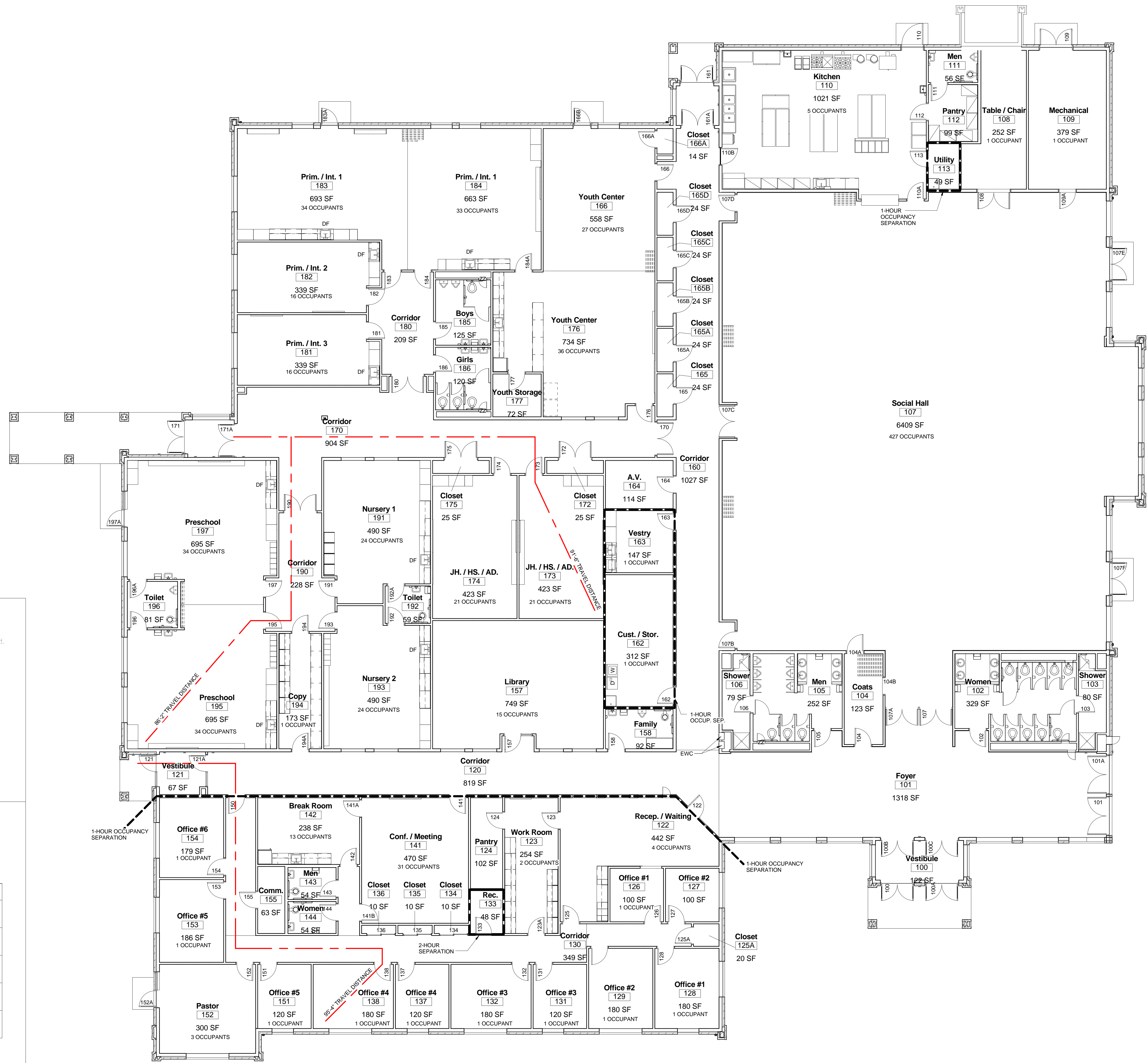
A-2 =	440 Occupants
B =	49 Occupants
E =	340 Occupants
Total:	829 Occupants

PLUMBING FIXTURE REQUIREMENTS BY OCCUPANCY (per 815 KAR 20:191)

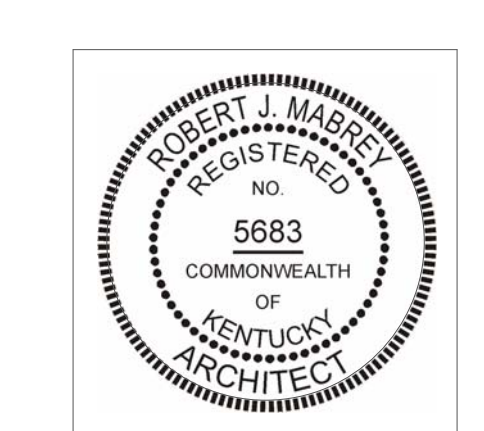
	Water Closets	Urinals	Lavatories	Drinking Fountain	Map Sink
Assembly:					
220 Men	3	2	3	1 Per Floor	1 Per Floor
220 Women	5	0	3		
Business:					
24 Men	1	1	1	1 Per 50	1 Per Floor
25 Women	2	0	1	1 Total	
Educational:					
170 Men	3	6	5	1 Per 75	1 Per Floor
170 Women	8	0	5	5 total	
Total Required	7 For Men 15 For Women	9 For Men 0 For Women	9 For Men 9 For Women	7	1
Actual Provided	7 For Men 16 For Women	10 For Men 0 For Women	9 For Men 9 For Women	10	2

EXITING ANALYSIS OF NEW CONSTRUCTION

Occupant load (Table 1004.1.1) = 829 Occupants Maximum.
 Exit Width Required (Table 1005.1) = $829 \times .15 = 124.35' < 432'$ provided.
 Maximum exit distance allowed (Table 1016.1) = $250' > 102'$ actual.
 Maximum common path of travel allowed (1004.2.5) = $100' < 72'-0"$ actual.
 Number of Exits Required (Table 1005.2.1) = 2 exits are required < 12 exits provided.
 Corridor walls are not required to be rated, per table 1017.1.



1 Code Review Plan - 01
 1/8" = 1'-0"



NO.	REVISIONS	DATE