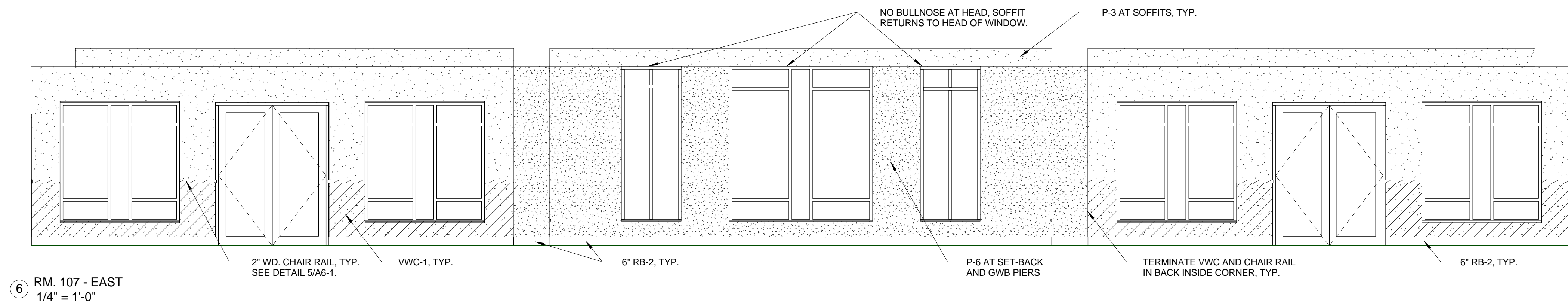
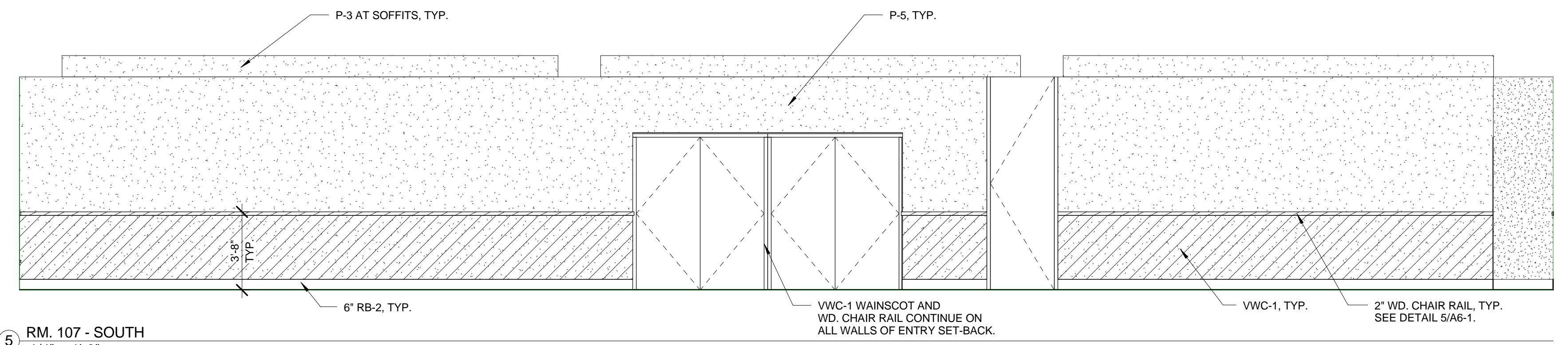




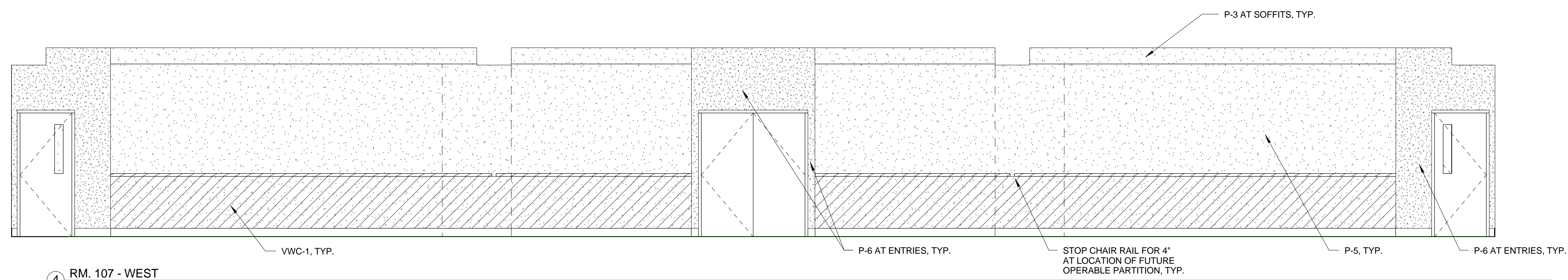
NO.	REVISIONS	DATE	BY



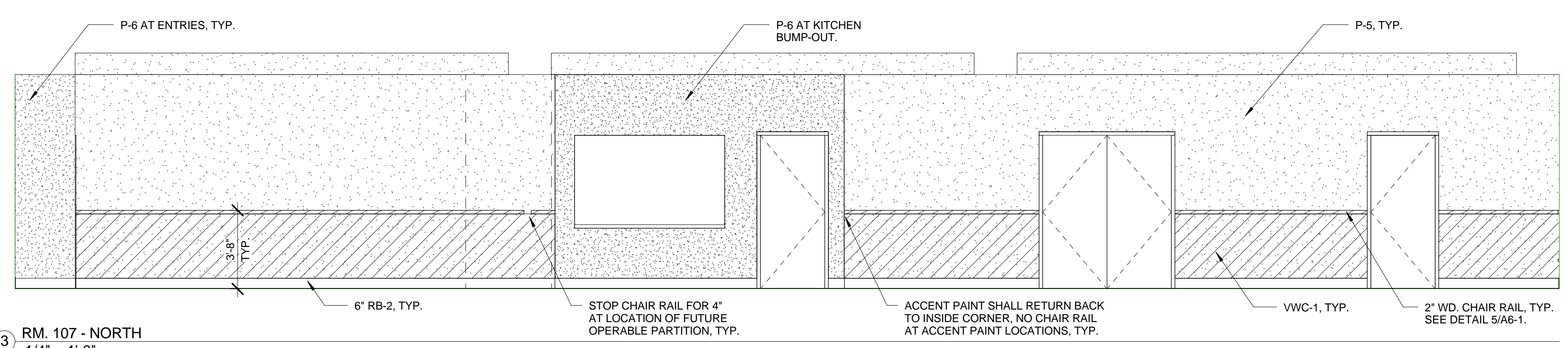
6 RM. 107 - EAST  
1/4" = 1'-0"



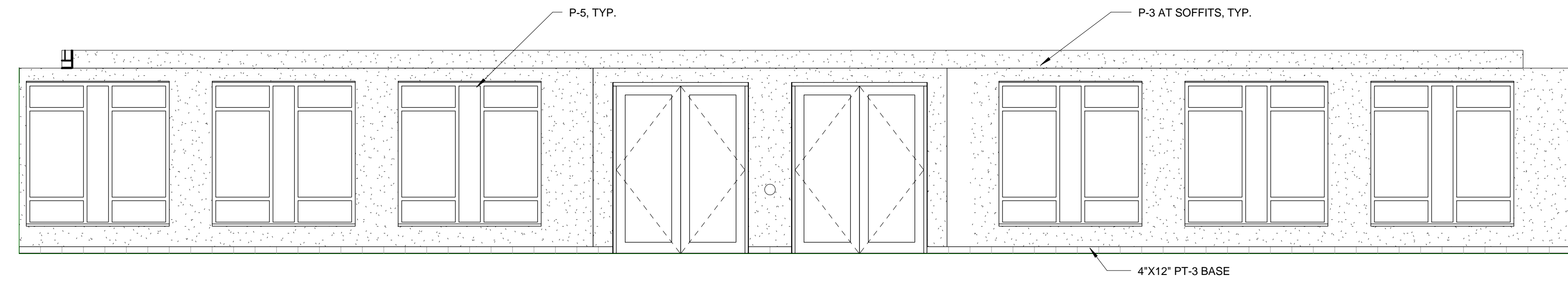
5 RM. 107 - SOUTH  
1/4" = 1'-0"



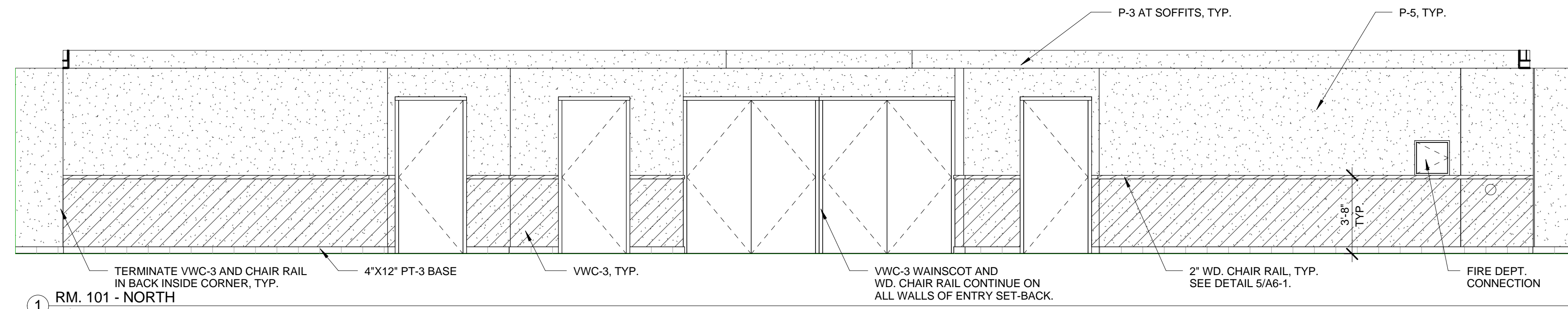
4 RM. 107 - WEST  
1/4" = 1'-0"



3 RM. 107 - NORTH  
1/4" = 1'-0"



2 RM. 101 - SOUTH  
1/4" = 1'-0"



1 RM. 101 - NORTH  
1/4" = 1'-0"

