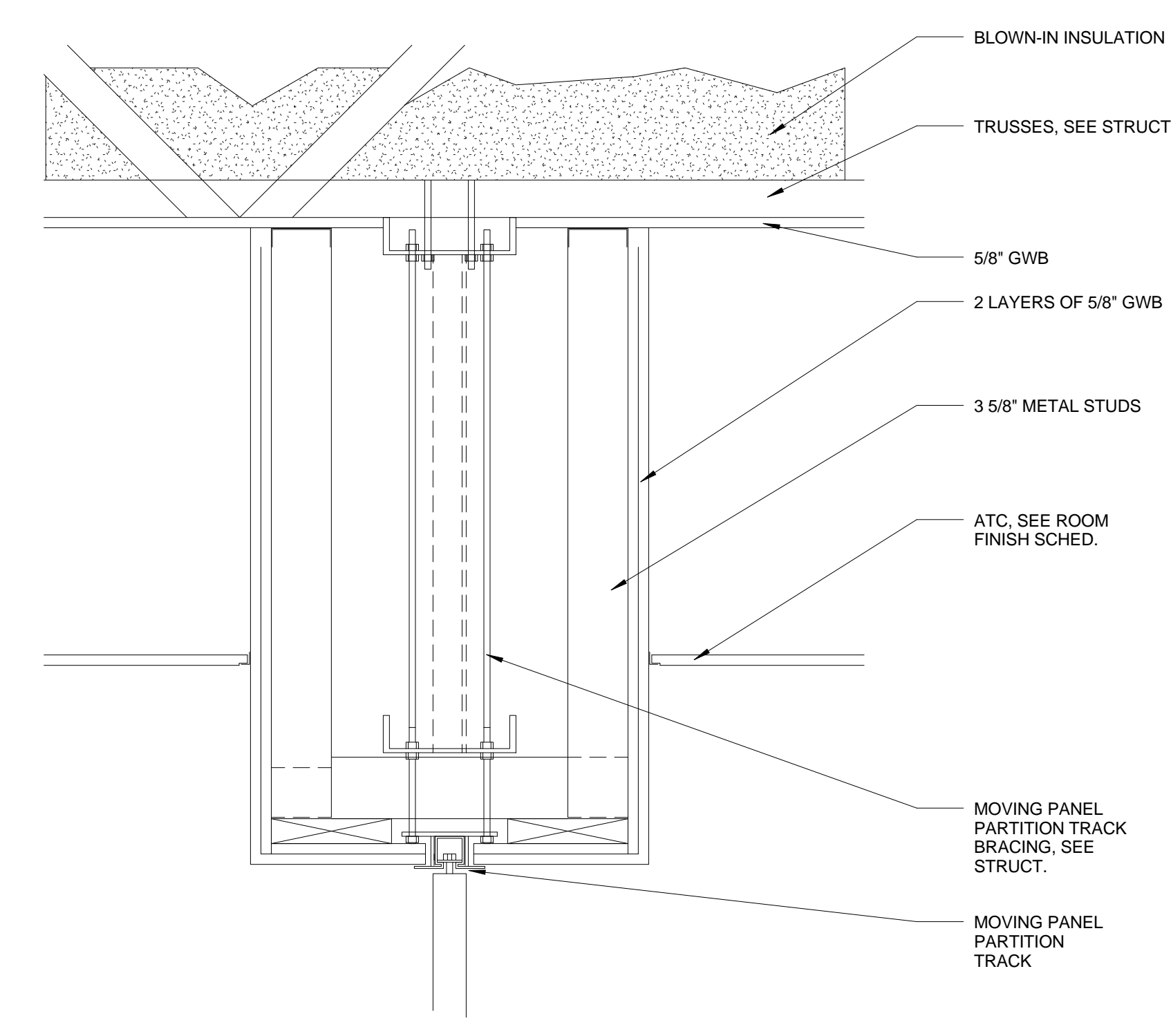
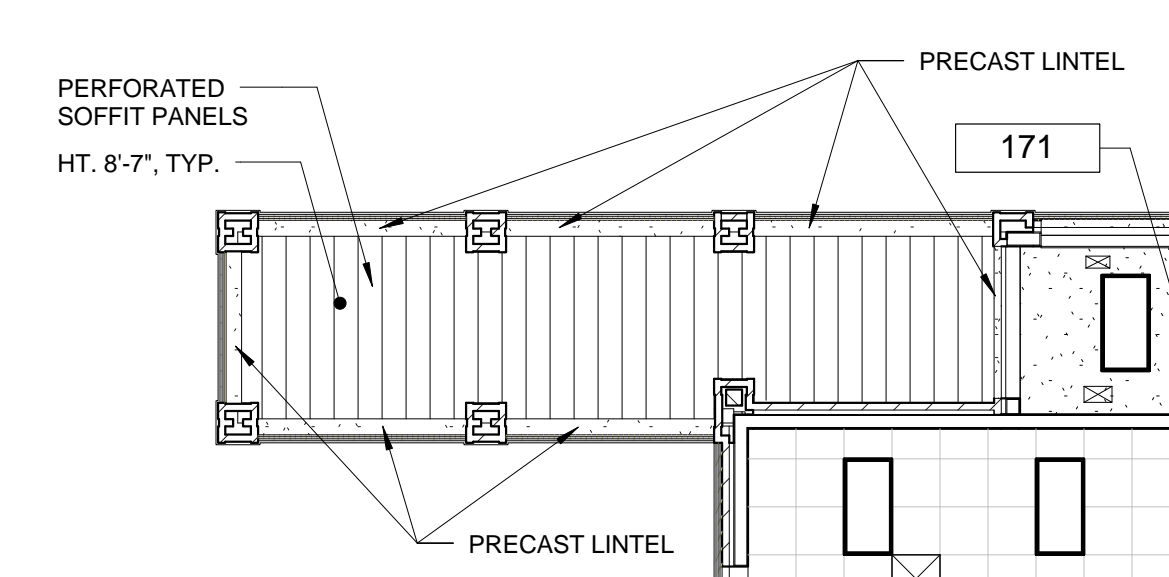


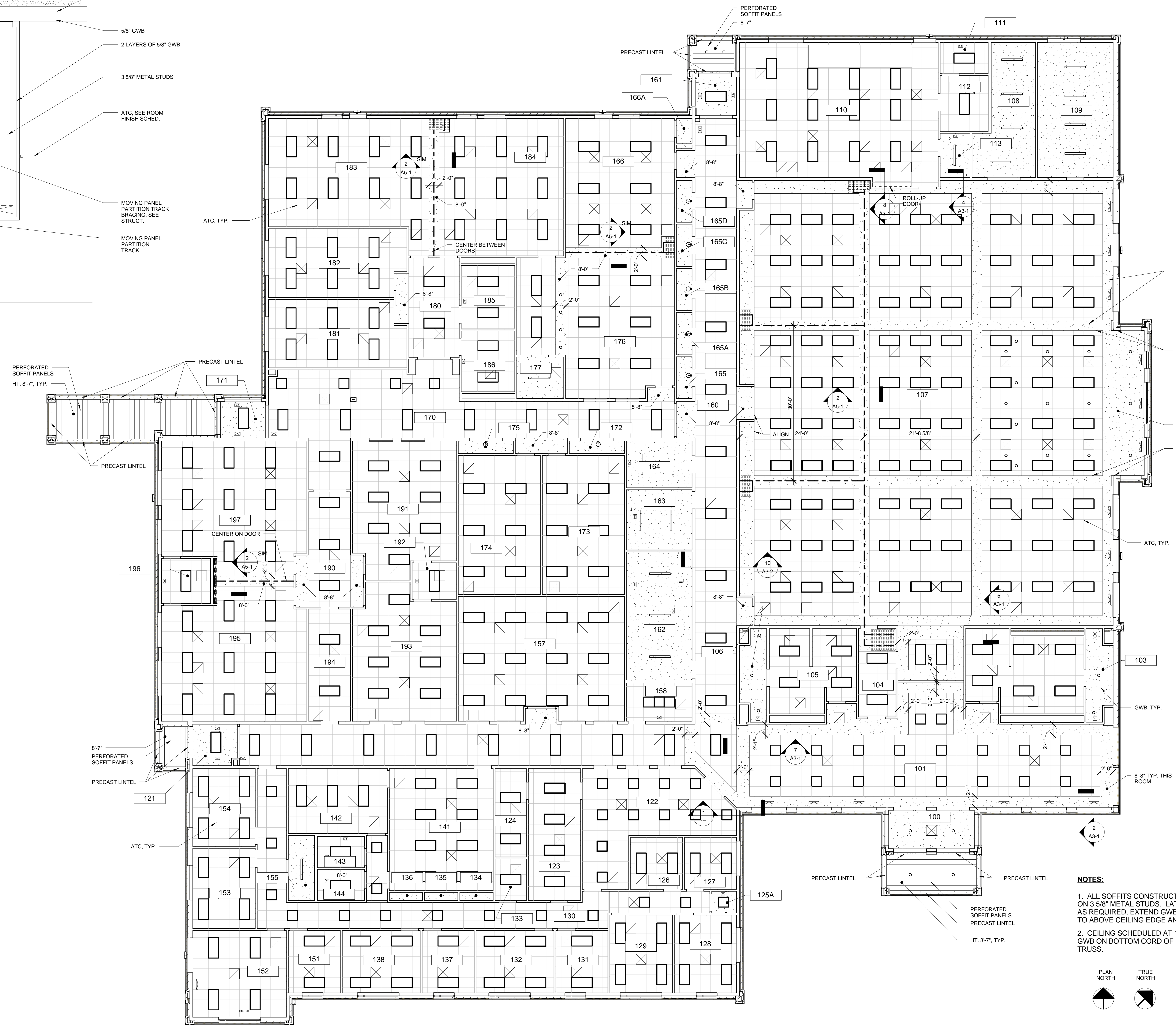
NO.	DESCRIPTION	DATE	BY



2 MOVING PANEL PARTITION DETAIL
1 1/2" = 1'-0"



1 REFLECTED CEILING PLAN - 01
1/8" = 1'-0"



- NOTES:**
1. ALL SOFFITS CONSTRUCTED OF 5/8" GWB ON 3/8" METAL STUDS. LATTEALLY BRACE AS REQUIRED. EXTEND GWB VERTICALLY UP TO ABOVE CEILING EDGE ANGLE.
 2. CEILING SCHEDULED AT 11'-3" ARE 5/8" GWB ON BOTTOM CORD OF STRUCTURAL TRUSS.

