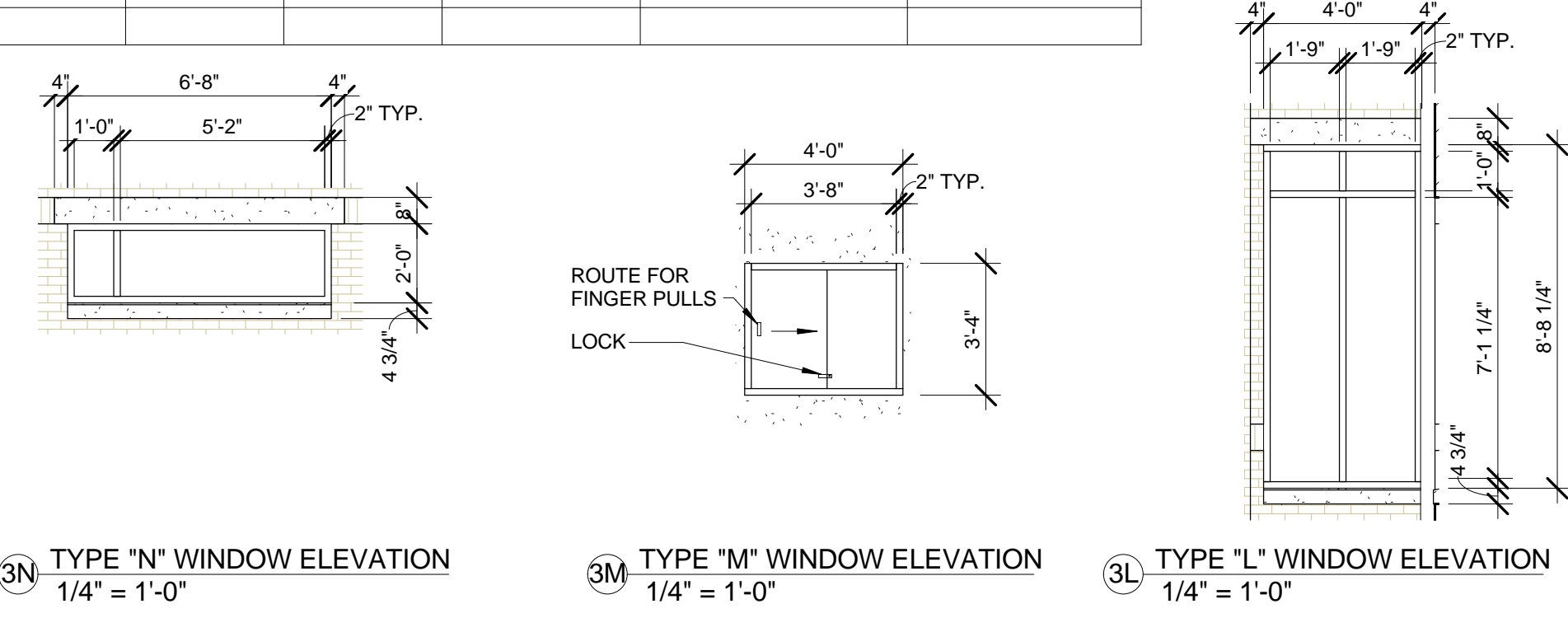
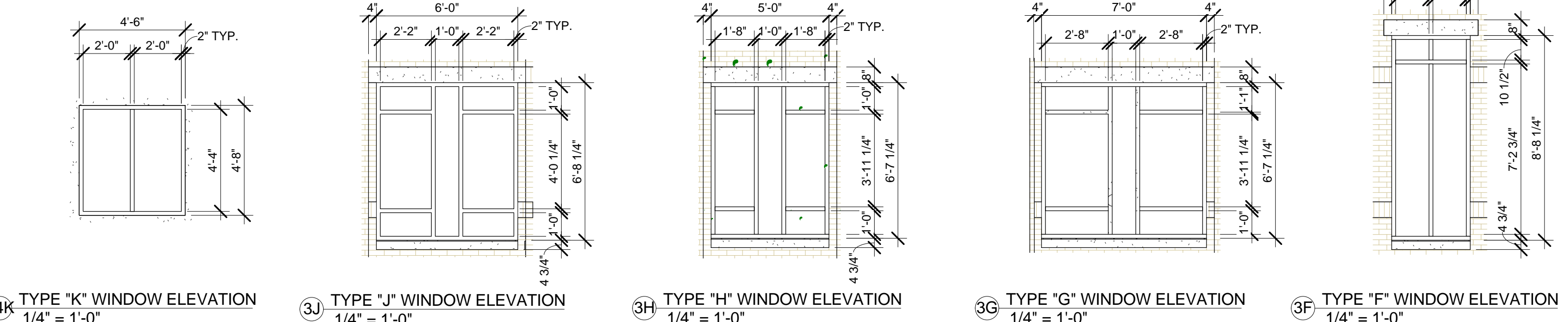


| Window and Borrow Light Schedule |       |           |       |           |              |             |             |             |              |          |                   |
|----------------------------------|-------|-----------|-------|-----------|--------------|-------------|-------------|-------------|--------------|----------|-------------------|
| Type Mark                        | Width | Height    | Count | Materials | Frame Finish | Head Detail | Jamb Detail | Sill Detail | Label        | Comments | Glazing @ Windows |
| A                                | 4'-0" | 5'-4"     | 8     | ALUM      | PF           | Q           | N           | L           |              |          | CTIG              |
| B                                | 8'-0" | 5'-4"     | 4     | ALUM      | PF           | Q           | N           | L           |              |          | CTIG              |
| C                                | 6'-8" | 5'-4"     | 10    | ALUM      | PF           | Q           | N           | L           |              |          | CTIG              |
| D                                | 6'-8" | 6'-8 1/4" | 10    |           |              |             |             |             |              |          | CTIG              |
| E                                | 8'-0" | 8'-8 1/4" | 1     | ALUM      | PF           | Q           | N           | L           |              |          | CTIG              |
| F                                | 3'-4" | 8'-8 1/4" | 2     | ALUM      | PF           | Q           | N           | L           |              |          | CTIG              |
| G                                | 7'-0" | 6'-7 1/4" | 1     | ALUM      | PF           | Q           | N           | L           |              |          | CTIG              |
| H                                | 5'-0" | 6'-7 1/4" | 1     | ALUM      | PF           | Q           | N           | L           |              |          | CTIG              |
| J                                | 6'-0" | 6'-8 1/4" | 2     | ALUM      | PF           | Q           | N           | L           |              |          | CTIG              |
| K                                | 4'-6" | 4'-8"     | 13    | HM        | P            | P           | P           | P           | NR OR 60 MIN | 1, 2     | CTG OR CFRG       |
| L                                | 4'-0" | 8'-8 1/4" | 2     | ALUM      | PF           | Q           | N           | L           |              |          | CTIG              |
| M                                | 4'-0" | 3'-4"     | 1     | HM        | PF           | R SIM       | R SIM       | R           |              |          | CTG               |
| N                                | 6'-8" | 2'-0"     | 1     | ALUM      | P            | Q           | N           | L           |              |          | CTIG              |
| Q                                | 2'-0" | 3'-4"     | 1     |           |              |             |             |             |              |          | CTIG              |

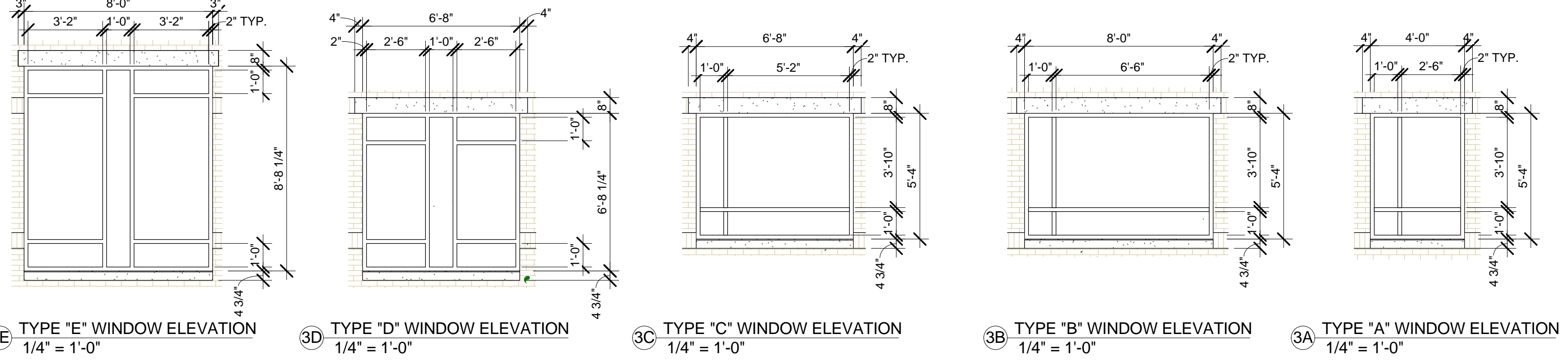
NOTE: SEE 2/A4-2 FOR WINDOW DETAILS, TYP.  
 COMMENTS: 1. PROVIDE CFRG @ ROOMS 122, PROVIDE CTG @ ROOMS 157, 176, 191 & 193  
 2. 60 MINUTE RATING AT ROOM 122. ALL OTHERS NOT RATED.



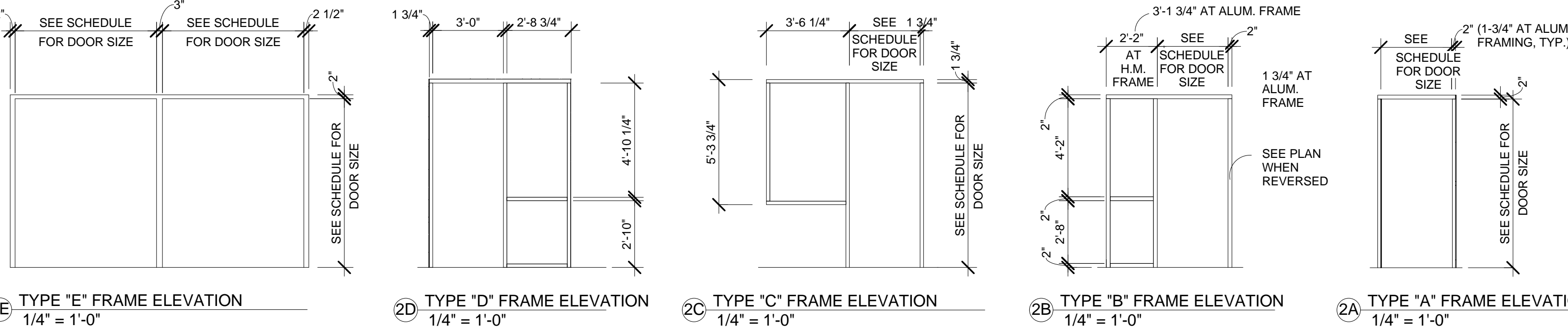
3N TYPE "N" WINDOW ELEVATION 1/4" = 1'-0"  
 3M TYPE "M" WINDOW ELEVATION 1/4" = 1'-0"  
 3L TYPE "L" WINDOW ELEVATION 1/4" = 1'-0"



3K TYPE "K" WINDOW ELEVATION 1/4" = 1'-0"  
 3J TYPE "J" WINDOW ELEVATION 1/4" = 1'-0"  
 3H TYPE "H" WINDOW ELEVATION 1/4" = 1'-0"  
 3G TYPE "G" WINDOW ELEVATION 1/4" = 1'-0"  
 3F TYPE "F" WINDOW ELEVATION 1/4" = 1'-0"

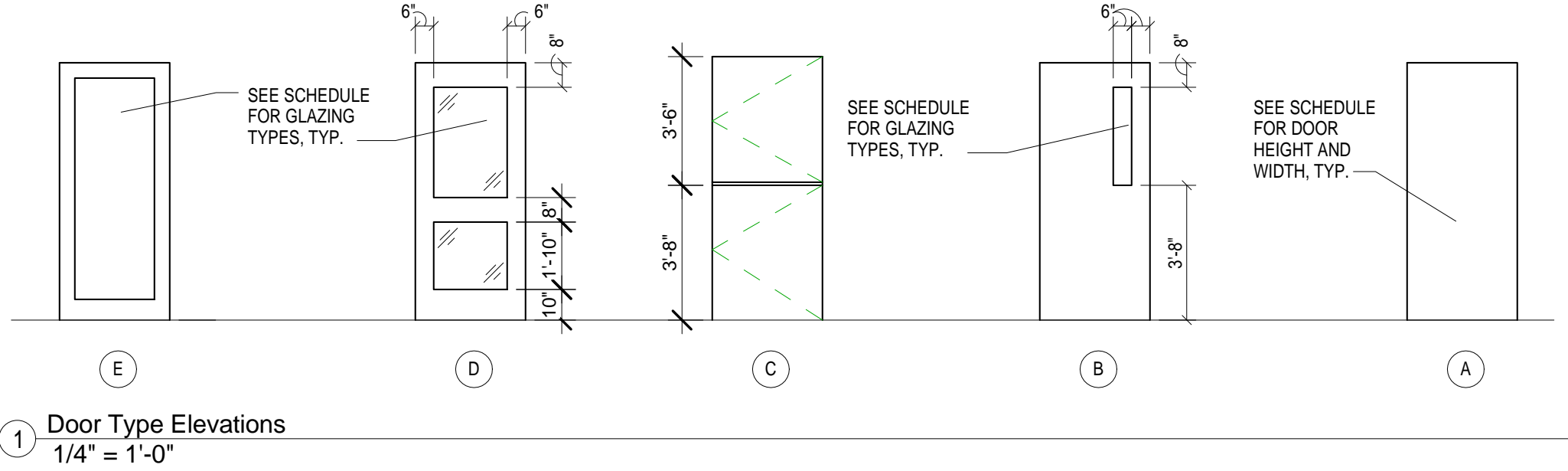


3E TYPE "E" WINDOW ELEVATION 1/4" = 1'-0"  
 3D TYPE "D" WINDOW ELEVATION 1/4" = 1'-0"  
 3C TYPE "C" WINDOW ELEVATION 1/4" = 1'-0"  
 3B TYPE "B" WINDOW ELEVATION 1/4" = 1'-0"  
 3A TYPE "A" WINDOW ELEVATION 1/4" = 1'-0"



2E TYPE "E" FRAME ELEVATION 1/4" = 1'-0"  
 2D TYPE "D" FRAME ELEVATION 1/4" = 1'-0"  
 2C TYPE "C" FRAME ELEVATION 1/4" = 1'-0"  
 2B TYPE "B" FRAME ELEVATION 1/4" = 1'-0"  
 2A TYPE "A" FRAME ELEVATION 1/4" = 1'-0"

- DOOR AND FRAME AND GLASS GENERAL NOTES:
- FIELD VERIFY ALL DOOR SIZES, FRAME SIZES, AND FRAME WID'AT ALL OPENINGS DEPENDANT ON EXISTING CONDITIONS. NOTE FIELD VERIFIED DIMENSIONS ON SHOP DRAWINGS.
  - SEE DETAIL 2/A4-1 FOR TYPICAL FRAME DIMENSIONS APPROFILE. CAULK ALL SIDES OF FRAME TYPICAL AND PAINT TO MATCH THE WALL.
  - ALL HOLLOW METAL REMOVABLE GLAZING STOPS SHALL BE 5/8" HIGH AND 5/8" WIDE.
  - CAULK ALL JOINTS BETWEEN INTERSECTING FRAME MEMBERS THAT ARE NOT WELDED WITH PAINTABLE CAULK TO PROVIDE A SMOOTH AND UNIFORM APPEARANCE WHEN PAINTED.
  - THE PERIMETER OF ALL FRAMES SHALL BE CAULKED AT BOTH THE EXTERIOR FACE AND THE INTERIOR FACE. PROVIDE CONTINUOUS BACKER ROD OR SHIM BLOCKING TO CAULK AGAINST.
  - SET ALL EXTERIOR FRAMES AND THRESHOLDS IN CAULK AT SILLS.
  - PROVIDE AND INSTALL THRU-WALL FLASHING AND WEEP HOLES ABOVE ALL EXTERIOR FRAME OPENINGS.
  - SEE PROJECT MANUAL SECTION 08800 FOR DESCRIPTION OF GLASS TYPES SHOWN ON SCHEDULES (I.E. "CTG").
  - EXTERIOR HOLLOW METAL FRAMES TO HAVE PERMANENT STOPS LOCATED AT THE EXTERIOR SIDE OF THE FRAME UNLESS NOTHERWISE.
  - SEE DOOR AND FRAME SCHEDULE FOR DOOR SIZES.
  - ALL HOLLOW METAL FRAMES WITH CEILING AT TOP OF FRAME AND WALL ABOVE SHALL BE KNEE BRACED WITH HEAVY-GAUGE STEEL STUDS FROM THE HEAD OF THE FRAME TO THE STRUCTURE ABOVE (FOR LATERAL STABILITY) AT 4'-0" O.C. KNEE BRACING SHALL BE INSTALLED WITH A MAXIMUM ANGLE (FROM THE HORIZONTAL) OF 45 DEGREES.
  - AT INTERIOR HOLLOW METAL FRAMES THAT OCCUR BETWEEN CORRIDORS AND ROOMS, THE GLASS SHALL OCCUR AT THE CORRIDOR SIDE OF THE FRAME UNLESS NOTED OTHERWISE.
  - LOCATION OF GLASS TYPES TO BE AS FOLLOWS UNLESS NOTEOTHERWISE.
    - ALL INTERIOR RATED DOORS & FRAMES TO RECEIVE WG.
    - ALL INTERIOR NON-RATED DOORS & FRAMES TO RECEIVE CTG.
  - SEE SHEET A4-2 FOR DETAILS LISTED IN SCHEDULE, UNLESS NOTED OTHERWISE.
  - SEE STRUCTURAL FOR LINTELS AT DOOR HEADS.
  - SEE SPECIFICATIONS FOR FINISH OF WOOD DOORS.



1 Door Type Elevations 1/4" = 1'-0"

| Door Schedule |       |        |       |           |        |        |         |          |        |        |        |       |          |                             |       |       |
|---------------|-------|--------|-------|-----------|--------|--------|---------|----------|--------|--------|--------|-------|----------|-----------------------------|-------|-------|
| Mark          | Width | Height | Doors |           |        | Frames |         |          |        | Hdwr   |        | Label | Comments | Glazing @ Doors             |       |       |
|               |       |        | Type  | Materials | Finish | Type   | Depth   | Material | Finish | Head   | Jamb   |       |          |                             | Type  | Label |
| 100           | 6'-0" | 7'-10" | E     | AL        | PF     | A      | 4 1/2"  | AL       | PF     | C      | D      | 1     |          |                             | CTG   |       |
| 100A          | 6'-0" | 7'-10" | E     | AL        | PF     | A      | 4 1/2"  | AL       | PF     | C      | D      | 2     |          | AUTOMATIC DOOR OPERATOR     | CTG   |       |
| 100B          | 6'-0" | 7'-10" | E     | AL        | PF     | A      | 4 1/2"  | AL       | PF     | M      | M      | 3     |          | 1                           | CTG   |       |
| 100C          | 6'-0" | 7'-10" | E     | AL        | PF     | A      | 4 1/2"  | AL       | PF     | M      | M      | 3     |          | AUTOMATIC DOOR OPERATOR, 1  | CTG   |       |
| 101           | 7'-0" | 7'-10" | E     | AL        | PF     | A      | 4 1/2"  | AL       | PF     | C      | D      | 2     |          |                             | CTIG  |       |
| 101A          | 7'-0" | 7'-10" | E     | AL        | PF     | A      | 4 1/2"  | AL       | PF     | C      | D      | 1     |          | AUTOMATIC DOOR OPERATOR     | CTIG  |       |
| 102           | 3'-0" | 7'-2"  | A     | WD        | ST     | A      | 5 3/4"  | HM       | P      | B      | B      | 18    |          |                             |       |       |
| 103           | 3'-0" | 7'-2"  | A     | WD        | ST     | A      | 5 3/4"  | HM       | P      | B      | B      | 19    |          |                             |       |       |
| 104           | 3'-0" | 7'-2"  | A     | WD        | ST     | A      | 5 3/4"  | HM       | P      | B      | B      | 19    |          |                             |       |       |
| 104A          | 3'-0" | 10'-0" | A     | HM        | P      | --     | --      | --       | P      | -      | -      | -     |          | POCKET DOOR - SECTION 10650 |       |       |
| 104B          | 3'-0" | 7'-2"  | -     | -         | -      | -      | -       | -        | P      | B      | B      | -     |          | NO DOOR - FRAME ONLY        |       |       |
| 105           | 3'-0" | 7'-2"  | A     | WD        | ST     | A      | 5 3/4"  | HM       | P      | B      | B      | 18    |          |                             |       |       |
| 106           | 3'-0" | 7'-2"  | A     | WD        | ST     | A      | 5 3/4"  | HM       | P      | B      | B      | 19    |          |                             |       |       |
| 107           | 6'-0" | 7'-2"  | A     | WD        | ST     | E      | 5 3/4"  | HM       | P      | B      | B      | 24    |          |                             |       |       |
| 107A          | 6'-0" | 7'-2"  | A     | WD        | ST     | E      | 5 3/4"  | HM       | P      | B      | B      | 24    |          |                             |       |       |
| 107B          | 3'-0" | 7'-2"  | A     | WD        | ST     | A      | 5 3/4"  | HM       | P      | B      | B      | 29    |          |                             |       |       |
| 107C          | 6'-0" | 7'-2"  | A     | WD        | ST     | A      | 5 3/4"  | HM       | P      | B      | J      | 22    |          |                             |       |       |
| 107D          | 3'-0" | 7'-2"  | A     | WD        | ST     | A      | 5 3/4"  | HM       | P      | B      | B      | 29    |          |                             |       |       |
| 107E          | 6'-0" | 7'-10" | E     | AL        | PF     | A      | 4 1/2"  | AL       | PF     | C      | D      | 1     |          | EXIT ONLY                   | CTIG  |       |
| 107F          | 6'-0" | 7'-10" | E     | AL        | PF     | A      | 4 1/2"  | AL       | PF     | C      | D      | 1     |          | EXIT ONLY                   | CTIG  |       |
| 108           | 6'-0" | 7'-2"  | A     | WD        | ST     | A      | 8 1/4"  | HM       | P      | B      | B      | 26    |          |                             |       |       |
| 109           | 6'-0" | 7'-10" | A     | HM        | P      | A      | 10 1/2" | HM       | P      | C SIM. | D SIM. | 6     |          |                             |       |       |
| 109A          | 3'-0" | 7'-2"  | A     | WD        | ST     | A      | 8 1/4"  | HM       | P      | B      | B      | 14    |          |                             |       |       |
| 110           | 4'-0" | 7'-10" | A     | HM        | P      | A      | 10 1/2" | HM       | P      | C SIM. | D SIM. | 7     |          |                             |       |       |
| 110A          | 3'-0" | 7'-2"  | B     | WD        | ST     | A      | 5 3/4"  | HM       | P      | B      | J      | 10    |          |                             | CTG   |       |
| 110B          | 3'-0" | 7'-2"  | A     | WD        | ST     | A      | 5 3/4"  | HM       | P      | A      | A      | 11    |          |                             |       |       |
| 111           | 3'-0" | 7'-2"  | A     | WD        | ST     | A      | 5 3/4"  | HM       | P      | B      | B      | 15    |          |                             |       |       |
| 112           | 3'-0" | 7'-2"  | A     | WD        | ST     | A      | 5 3/4"  | HM       | P      | B      | B      | 17    |          |                             |       |       |
| 113           | 3'-0" | 7'-2"  | A     | WD        | ST     | A      | 5 3/4"  | HM       | P      | B      | B      | 14    |          | 60 MIN                      |       |       |
| 121           | 3'-0" | 7'-10" | E     | AL        | PF     | D      | 4 1/2"  | AL       | PF     | C      | D      | 4     |          | AUTOMATIC DOOR OPERATOR     | CTG   |       |
| 121A          | 3'-0" | 7'-10" | E     | AL        | PF     | D      | 4 1/2"  | AL       | PF     | M      | M      | 5     |          | AUTOMATIC DOOR OPERATOR, 1  | CTG   |       |
| 122           | 3'-0" | 7'-2"  | D     | WD        | PF     | B      | 5 3/4"  | HM       | P      | A      | A      | 11    |          | 60 MIN                      | CFRIG |       |
| 123           | 3'-0" | 7'-2"  | A     | WD        | ST     | A      | 5 3/4"  | HM       | P      | B      | B      | 12    |          |                             |       |       |
| 123A          | 3'-0" | 7'-2"  | A     | WD        | ST     | A      | 5 3/4"  | HM       | P      | B      | B      | 12    |          |                             |       |       |
| 124           | 3'-0" | 7'-2"  | A     | WD        | ST     | A      | 5 3/4"  | HM       | P      | B      | B      | 8     |          |                             |       |       |
| 125           | 3'-0" | 7'-2"  | B     | WD        | ST     | A      | 5 3/4"  | HM       | P      | B      | B      | 9     |          |                             | CTG   |       |
| 125A          | 3'-0" | 7'-2"  | A     | WD        | ST     | A      | 5 3/4"  | HM       | P      | B      | B      | 9     |          |                             |       |       |
| 126           | 3'-0" | 7'-2"  | B     | WD        | ST     | A      | 5 3/4"  | HM       | P      | B      | B      | 9     |          |                             | CTG   |       |
| 127           | 3'-0" | 7'-2"  | B     | WD        | ST     | A      | 5 3/4"  | HM       | P      | B      | B      | 9     |          |                             | CTG   |       |
| 128           | 3'-0" | 7'-2"  | B     | WD        | ST     | A      | 5 3/4"  | HM       | P      | B      | B      | 9     |          |                             | CTG   |       |
| 129           | 3'-0" | 7'-2"  | B     | WD        | ST     | A      | 5 3/4"  | HM       | P      | B      | B      | 9     |          |                             | CTG   |       |
| 131           | 3'-0" | 7'-2"  | B     | WD        | ST     | A      | 5 3/4"  | HM       | P      | B      | B      | 9     |          |                             | CTG   |       |
| 132           | 3'-0" | 7'-2"  | B     | WD        | ST     | A      | 5 3/4"  | HM       | P      | B      | B      | 9     |          |                             | CTG   |       |
| 133           | 3'-0" | 7'-2"  | A     | WD        | ST     | A      | 5 3/4"  | HM       | P      | B      | B      | 10    |          | 90 MIN                      |       |       |
| 134           | 5'-4" | 7'-0"  | A     | WD        | ST     | A      | 5 3/4"  | HM       | P      | G      | E      | 30    |          | SLIDING DOOR                |       |       |
| 135           | 5'-4" | 7'-0"  | A     | WD        | ST     | A      | 5 3/4"  | HM       | P      | G      | E      | 30    |          | SLIDING DOOR                |       |       |
| 136           | 5'-4" | 7'-0"  | A     | WD        | ST     | A      | 5 3/4"  | HM       | P      | G      | E      | 30    |          | SLIDING DOOR                |       |       |
| 137           | 3'-0" | 7'-2"  | B     | WD        | ST     | A      | 5 3/4"  | HM       | P      | B      | B      | 9     |          |                             | CTG   |       |
| 138           | 3'-0" | 7'-2"  | B     | WD        | ST     | A      | 5 3/4"  | HM       | P      | B      | B      | 9     |          |                             | CTG   |       |
| 141           | 3'-0" | 7'-2"  | D     | WD        | ST     | A      | 5 3/4"  | HM       | P      | A      | B      | 10    |          | 60 MIN                      | CFRIG |       |
| 141A          | 3'-0" | 7'-2"  | B     | WD        | ST     | A      | 5 3/4"  | HM       | P      | B      | B      | 16    |          |                             | CTG   |       |
| 141B          | 3'-0" | 7'-2"  | B     | WD        | ST     | A      | 5 3/4"  | HM       | P      | B      | B      | 16    |          |                             | CTG   |       |
| 142           | 3'-0" | 7'-2"  | B     | WD        | ST     | A      | 5 3/4"  | HM       | P      | B      | B      | 16    |          |                             | CTG   |       |
| 143           | 3'-0" | 7'-2"  | A     | WD        | ST     | A      | 5 3/4"  | HM       | P      | B      | B      | 15    |          |                             |       |       |
| 144           | 3'-0" | 7'-2"  | A     | WD        | ST     | A      | 5 3/4"  | HM       | P      | B      | B      | 15    |          |                             |       |       |
| 150           | 3'-0" | 7'-2"  | D     | WD        | ST     | A      | 5 3/4"  | HM       | P      | A      | A      | 10    |          | 60 MIN                      | CFRIG |       |
| 151           | 3'-0" | 7'-2"  | B     | WD        | ST     | A      | 5 3/4"  | HM       | P      | B      | B      | 9     |          |                             | CTG   |       |
| 152           | 3'-0" | 7'-2"  | B     | WD        | ST     | A      | 5 3/4"  | HM       | P      | B      | B      | 9     |          |                             | CTG   |       |
| 152A          | 3'-0" | 7'-10" | E     | AL        | PF     | C      | 4 1/2"  | AL       | PF     | C      | D      | 4     |          | 1                           | CTIG  |       |
| 153           | 3'-0" | 7'-2"  | B     | WD        | ST     | A      | 5 3/4"  | HM       | P      | B      | B      | 9     |          |                             | CTG   |       |
| 154           | 3'-0" | 7'-2"  | B     | WD        | ST     | A      | 5 3/4"  | HM       | P      | B      | B      | 9     |          |                             | CTG   |       |
| 155           | 3'-0" | 7'-2"  | A     | WD        | ST     | A      | 5 3/4"  | HM       | P      | B      | B      | 14    |          |                             |       |       |
| 157           | 3'-0" | 7'-2"  | D     | WD        | ST     | B      | 5 3/4"  | HM       | P      | B      | B      | 10    |          |                             | CTG   |       |
| 158           | 3'-0" | 7'-2"  | A     | WD        | ST     | A      | 8 1/4"  | HM       | P      | A      | A      | 15    |          |                             |       |       |
| 161           | 6'-0" | 7'-10" | E     | AL        | PF     | A      | 4 1/2"  | AL       | PF     | C      | D      | 2     |          | AUTOMATIC DOOR OPERATOR     | CTG   |       |
| 161A          | 6'-0" | 7'-10" | E     | AL        | PF     | A      | 4 1/2"  | AL       | PF     | M      | M      | 2     |          | AUTOMATIC DOOR OPERATOR, 1  | CTG   |       |
| 162           | 3'-0" | 7'-2"  | A     | WD        | ST     | A      | 5 3/4"  | HM       | P      | A      | A      | 10    |          | 60 MIN                      |       |       |
| 163           | 3'-0" | 7'-2"  | A     | WD        | ST     | A      | 5 3/4"  | HM       | P      | A      | A      | 10    |          | 60 MIN                      |       |       |
| 164           | 3'-0" | 7'-2"  | A     | WD        | ST     | A      | 5 3/4"  | HM       | P      | A      | A      | 13    |          |                             |       |       |
| 165           | 3'-0" | 7'-2"  | A     | WD        | ST     | A      | 5 3/4"  | HM       | P      | A      | A      | 21    |          |                             |       |       |
| 165A          | 3'-0" | 7'-2"  | A     | WD        | ST     | A      | 5 3/4"  | HM       | P      | A      | A      | 21    |          |                             |       |       |
| 165B          | 3'-0" | 7'-2"  | A     | WD        | ST     | A      | 5 3/4"  | HM       | P      | A      | A      | 21    |          |                             |       |       |
| 165C          | 3'-0" | 7'-2"  | A     | WD        | ST     | A      | 5 3/4"  | HM       | P      | A      | A      | 21    |          |                             |       |       |
| 165D          | 3'-0" | 7'-2"  | A     | WD        | ST     | A      | 5 3/4"  | HM       | P      | A      | A      | 21    |          |                             |       |       |
| 166           | 3'-0" | 7'-2"  | B     | WD        | ST     | A      | 5 3/4"  | HM       | P      | B      | B      | 12    |          |                             | CTG   |       |
| 166A          | 3'-0" | 7'-2"  | A     | WD        | ST     | A      | 5 3/4"  | HM       | P      | B      | B      | 12    |          |                             |       |       |
| 166B          | 3'-0" | 7'-10" | E     | AL        | PF     | A      | 4 1/2"  | AL       | PF     | C      | D      | 4     |          |                             | CTIG  |       |
| 170           | 6'-0" | 7'-10" | A     | HM        | P      | A      | 5 3/4"  | HM       | P      | B      | B      | 23    |          |                             |       |       |
| 171           | 6'-0" | 7'-10" | E     | AL        | PF     | A      | 4 1/2"  | AL       | PF     | C      | D      | 3     |          | AUTOMATIC DOOR OPERATOR     | CTG   |       |
| 171A          | 6'-0" | 7'-10" | E     | AL        | PF     | A      | 4 1/2"  | AL       | PF     | M      | M      | 3     |          | AUTOMATIC DOOR OPERATOR, 1  | CTG   |       |
| 172           | 6'-0" | 7'-2"  | A     | WD        | ST     | A      | 5 3/4"  | HM       | P      | A      | A      | 27    |          |                             |       |       |
| 173           | 3'-0" | 7'-2"  | B     | WD        | ST     | A      | 5 3/4"  | HM       | P      | B      | B      | 12    |          |                             | CTG   |       |
| 174           | 3'-0" | 7'-2"  | B     | WD        | ST     | A      | 5 3/4"  | HM       | P      | B      | B      | 12    |          |                             |       |       |